



SIZWE SECHABA
CONSTRUCTION PROJECTS (PTY) LTD

SIZWE SECHABA CONSTRUCTION PROJECTS

COMPANY PROFILE
2026



www.sizwesechaba.co.za



ABOUT US

Sizwe Sechaba Construction Projects (Pty) Ltd is an enterprise that was started over 20 years ago, with a focus on general building and civil & road construction projects. As a diversified market leader, we offer complete turnkey solutions multi-disciplinary packages in both the construction and civil sectors as well as professional services. With a myriad of skills, support and infrastructure, we are able to identify key objectives, provide strategic planning, structural and engineering services in specialised fields such as water and sanitation, instrumentation and electrical requirements.

Sizwe Sechaba Construction Projects (Pty) Ltd has placed its mark on the construction industry, offering turnkey solutions with multi-disciplinary packages incorporating the building, civil and professional industries. Sizwe Sechaba Construction Projects (Pty) Ltd has a CIDB Grading in the following grading sections (GB, CE, ME, EP, SQ) which reflects the experience the company enjoys in the construction and civil engineering sectors. We are firm advocates for government initiatives for transformation and upliftment of local and rural communities. As a 100% Black Empowerment Company, we pride ourselves in working with emerging EME's, QSE's and SMME's dedicated to providing quality project completion.





SIZWE SECHABA
CONSTRUCTION PROJECTS (PTY) LTD

WHAT WE DO

Sizwe Sechaba Construction Projects (Pty) Ltd has extensive experience in the development and implementation of local community construction projects, including electrical, mechanical and specialised work requirements. We are self-sufficient and wholly independent regarding plants, tools and construction equipment, ensuring uninterrupted workflow.

Applied categories include both private and public sector projects; schools, housing, hospitals and public buildings, civil, structural, mechanical engineering and infrastructure as well as road design and construction projects. We also have experience in alternative (GREEN) building methods and materials. We offer maintenance and refurbishment services to existing buildings as well as turnkey new projects.



AREAS OF FOCUS

Skills Development – Facilitation and Training

- Contractual Participation Goal – for government funded projects and projects within local communities with a 30% target of scope of work
- awarded to members of that community.
- We have created a structured Regulatory Framework Policy for implementation of the above goals to create quality training and enterprise
- development for all participants from local communities, creating sustainability and upliftment.
- Enterprise and Supplier Development Programmes.
- Procurement from local community sub-contractors, suppliers and manufacturers.
- Job creation on-site and through developing manufacturer plants in local communities.
- Skills development for local community members that participate in projects.
- Enterprise and Supplier Development Programmes are implemented and documented in line with the BEE Codes of Good Practice.
- Skills Development Programmes for youth and women in construction.
- Apprenticeship Programmes for on-site practical experience for construction students





OUR POLICIES

Health and Safety

Sizwe Sechaba Construction Projects (Pty) Ltd complies with Health and Safety, Quality Standards and Environmental Regulations. We excel at enforcing relevant industry standards and regulations in all we do. Our key objective is to achieve a safe working environment for all, and our site management ensures that safety is not compromised at any time. A ZERO TOLERANCE policy is strictly enforced to ensure compliance with safety standards is met, and we regularly undergo safety audits. And training.

Environmental Awareness

Sizwe Sechaba Construction Projects (Pty) Ltd is acutely aware that construction development leaves behind a large and damaging carbon footprint. We strictly adhere to all regulations relating to environment, as set out by local Council or any other regulatory board. Every effort is made to ensure all new construction results in minimal damage to the surrounding environment. Architectural integrity is also sensitively executed to compliment and fit into surrounding areas.



SIZWE SECHABA
CONSTRUCTION PROJECTS (PTY) LTD

CONSTRUCTION EXPERTISE

BRIDGE CONSTRUCTION





SIZWE SECHABA
CONSTRUCTION PROJECTS (PTY) LTD

CONSTRUCTION EXPERTISE

ROAD CONSTRUCTION



LIST OF COMPLETED PROJECTS

LISTED EXPERIENCE AND TRACK RECORD

- ST JOHN MARANGE CHURCH
- LADY SELBOURNE HOUSING PROJECT PHASE 2
- MOLETSAMONGWE ROAD PHASE 3
- PALM RIDGE PRIMARY SCHOOL : FULL SCHOOL TURNKEY
- EVANS PARK PRIMARY SCHOOL : FULL SCHOOL TURNKEY
- ACT CLASSROOMS
- ACT CLASSROOMS PART 2
- ALLOCATION 8 CLASSROOMS
- ALLOCATION 7 CLASSROOMS
- ALLOCATION 6 CLASSROOMS
- ALLOCATION 4&5 CLASSROOMS
- ALLOCATION 3 ADD ON FOR ALLOCATION 1 CLASSROOMS
- 352 MOBILE CLASSROOMS & 25 GRADE "R" CLASSROOMS -





SIZWE SECHABA
CONSTRUCTION PROJECTS (PTY) LTD

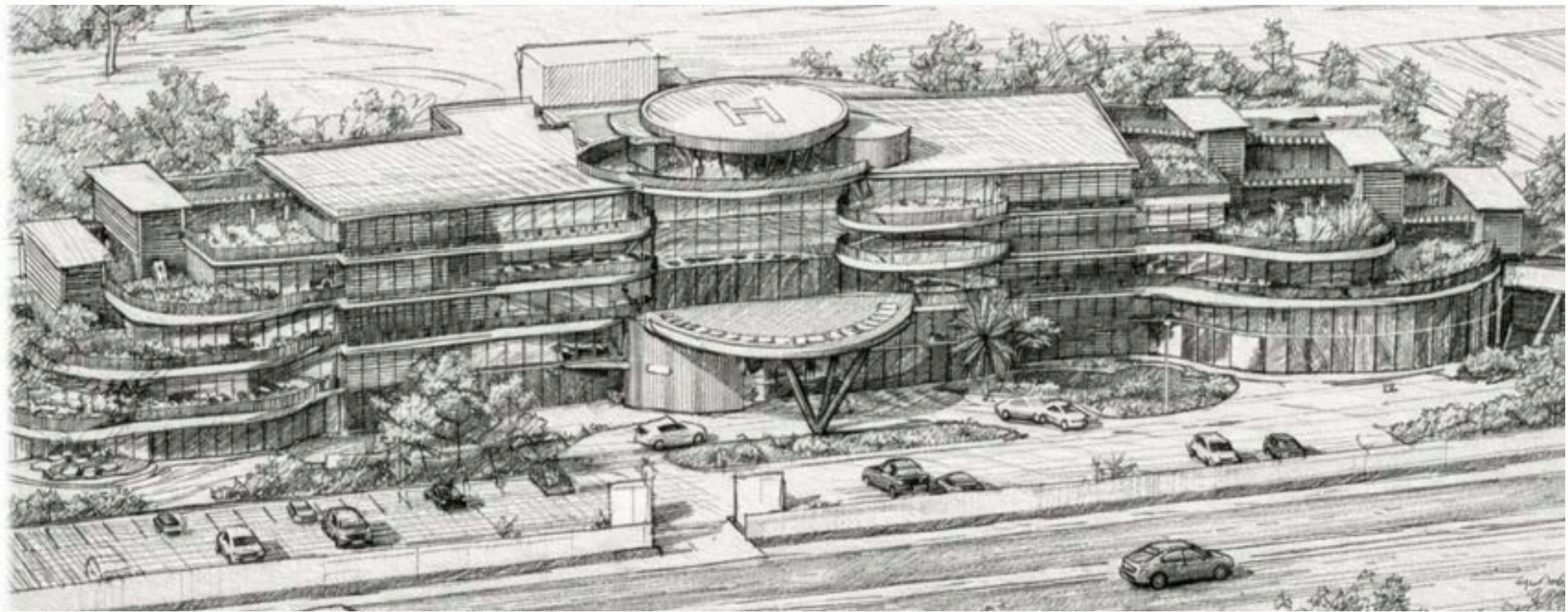


ST. JOHN MARANGE CHURCH - BOCHA (ZIM) - DESIGN





GWERU PROPOSED 5 STAR HOTEL - DESIGN





SIZWE SECHABA
CONSTRUCTION PROJECTS (PTY) LTD

GWERU PROPOSED 5 STAR HOTEL - DESIGN





SIZWE SECHABA
CONSTRUCTION PROJECTS (PTY) LTD

PALM RIDGE PRIMARY SCHOOL - GAUTENG





SIZWE SECHABA
CONSTRUCTION PROJECTS (PTY) LTD

EVANSPARK PRIMARY SCHOOL - GAUTENG





SIZWE SECHABA
CONSTRUCTION PROJECTS (PTY) LTD

THANK YOU.

GET IN TOUCH WITH US:



brianb@sizwesechaba.co.za



+27 83 625 3909
+27 10 001 0632



www.sizwesechaba.co.za



abigailb@sizwesechaba.co.za



+27 83236 4264
+27 10 001 0632



www.sizwesechaba.co.za



gideon@sizwesechaba.co.za



+27 10 001 0632



www.sizwesechaba.co.za

